



## BRG1 mouse mAb

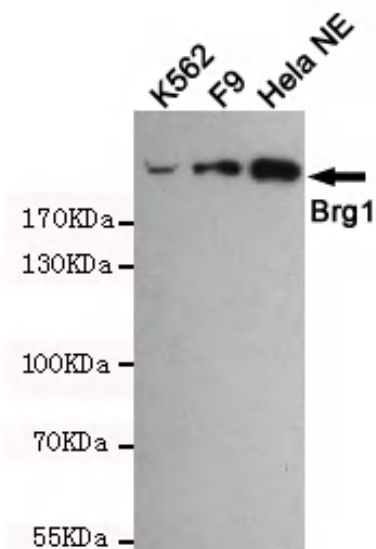
<b>Catalog No</b>	YP-Ab-01102
<b>Isotype</b>	IgG
<b>Reactivity</b>	Human;Mouse
<b>Applications</b>	WB;IF;IP
<b>Gene Name</b>	smarca4
<b>Protein Name</b>	
<b>Immunogen</b>	Purified recombinant human BRG1 protein fragments expressed in E.coli.
<b>Specificity</b>	This antibody detects endogenous levels of BRG1 and does not cross-react with related proteins.
<b>Formulation</b>	Liquid in PBS containing 50% glycerol, 0.5% BSA and 0.02% sodium azide.
<b>Source</b>	Monoclonal, Mouse
<b>Purification</b>	The antibody was affinity-purified from mouse ascites by affinity-chromatography using epitope-specific immunogen.
<b>Dilution</b>	wb dilution 1:1000 icc dilution 1:50. IF 1:50-200
<b>Concentration</b>	1 mg/ml
<b>Purity</b>	≥90%
<b>Storage Stability</b>	-20°C/1 year
<b>Synonyms</b>	ATP dependent helicase SMARCA4;ATP-dependent helicase SMARCA4;BAF 190;BAF190;BAF190A;Brahma protein homolog 1;Brahma protein like 1;BRG1;BRG1 associated factor 190A;BRG1 protein;BRG1-associated factor 190A;BRM/SWI2 related gene 1;Global transcription activator homologous sequence;global transcription activator snf2l4;Homeotic gene regulator;hSNF2b;Mitotic growth and transcription activator;MRD16;Nuclear protein GRB1;Protein brahma homolog 1;Protein BRG-1; Protein BRG1;RTPS2;SMARC A4;SMARCA4;SMCA4_HUMAN;SNF2;SNF2 beta;SNF2 like 4;SNF2-beta;SNF2B;SNF2L4;SNF2LB;Sucrose nonfermenting like 4;SWI/SNF related matrix associated actin dependent regulator of chromatin subfamily A member 4;SWI/SNF related, matrix associated, actin dependent regulator of chromatin, subfamily a, member 4;SWI/SNF-related matrix-associated actin-dependent regulator of chromatin subfamily A member 4;SWI2;Transcription activator BRG1.
<b>Observed Band</b>	220kD
<b>Cell Pathway</b>	Nucleus . Colocalizes with long non-coding RNA Evf2 in nuclear RNA clouds. .



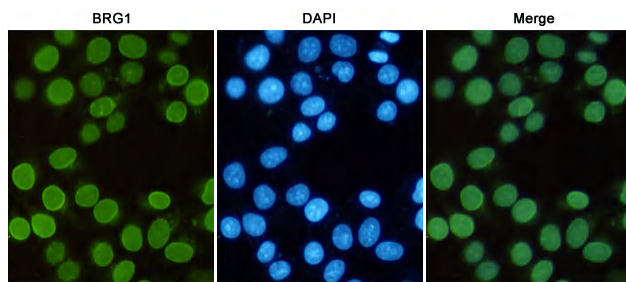
<b>Tissue Specificity</b>	Colocalizes with ZEB1 in E-cadherin-negative cells from established lines, and stroma of normal colon as well as in de-differentiated epithelial cells at the invasion front of colorectal carcinomas (at protein level).
<b>Function</b>	function:Transcriptional coactivator cooperating with nuclear hormone receptors to potentiate transcriptional activation. Also involved in vitamin D-coupled transcription regulation via its association with the WINAC complex, a chromatin-remodeling complex recruited by vitamin D receptor (VDR), which is required for the ligand-bound VDR-mediated transrepression of the CYP27B1 gene.,PTM:Phosphorylated upon DNA damage, probably by ATM or ATR.,similarity:Belongs to the SNF2/RAD54 helicase family.,similarity:Contains 1 bromo domain.,similarity:Contains 1 helicase ATP-binding domain.,similarity:Contains 1 helicase C-terminal domain.,similarity:Contains 1 HSA domain.,subunit:Interacts with NR3C1, PGR, SMARD1, TOPBP1 and ZMIM2/ZIMP7. Component of the BAF complex, which includes at least actin (ACTB), ARID1A, ARID1B/BAF250, SMARCA2, SMARCA4/BRG1, ACTL6A/BAF53, ACTL6B/BAF53B, SMARCE1/BAF57, SMARC
<b>Background</b>	The protein encoded by this gene is a member of the SWI/SNF family of proteins and is similar to the brahma protein of Drosophila. Members of this family have helicase and ATPase activities and are thought to regulate transcription of certain genes by altering the chromatin structure around those genes. The encoded protein is part of the large ATP-dependent chromatin remodeling complex SNF/SWI, which is required for transcriptional activation of genes normally repressed by chromatin. In addition, this protein can bind BRCA1, as well as regulate the expression of the tumorigenic protein CD44. Mutations in this gene cause rhabdoid tumor predisposition syndrome type 2. Multiple transcript variants encoding different isoforms have been found for this gene. [provided by RefSeq, May 2012],
<b>matters needing attention</b>	Avoid repeated freezing and thawing!
<b>Usage suggestions</b>	This product can be used in immunological reaction related experiments. For more information, please consult technical personnel.



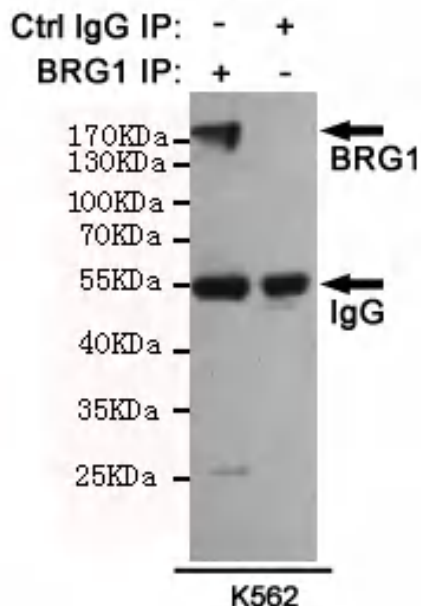
## Products Images



Western blot detection of BRG1 in HeLa NE, F9 and K562 cell lysates using BRG1 mouse mAb (1:1000 diluted). Predicted band size: 220KDa. Observed band size: 220KDa.



Immunofluorescent analysis of HeLa cells fixed with 4% Paraformaldehyde and using anti-BRG1 mouse mAb (dilution 1:50). DAPI was used to stain nucleus (blue).



Immunoprecipitation analysis of K562 cell lysates using BRG1 mouse mAb (201025).